

# DECA MG3800R

Erase & Test Solutions

## M.2 NVME / M.2 SATA

### Flexible Interface Configurations

▪80 Ports M.2 NVMe / M.2 SATA

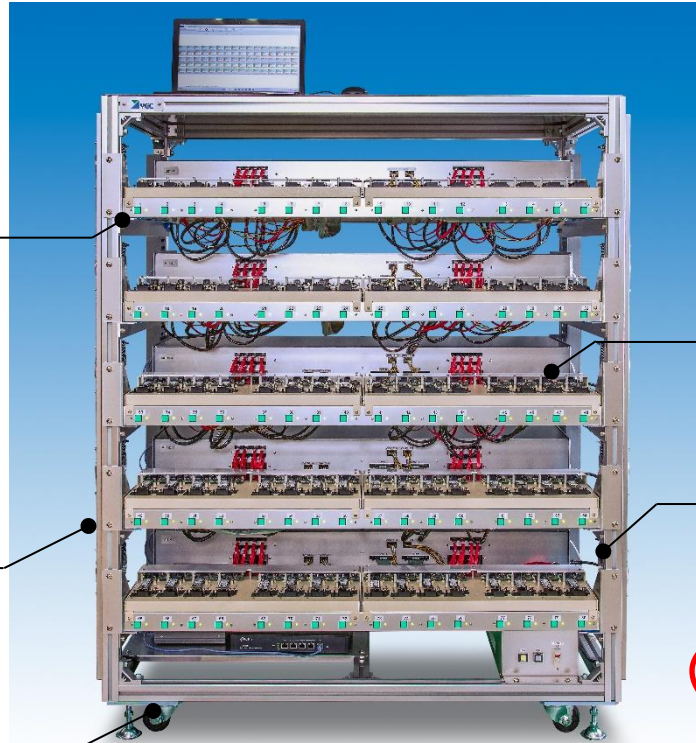
### Test & Erasure Scripts

NIST SP800-88  
DoD 5220.00 M  
Security Erase  
Test & Repair  
Modifiable Scripts  
Health Grading  
Power-on-Hour  
and more...

Dual Push-button and  
In-Screen Operations

Side Cooling Fan Units

Casters and Stabilizers



80 Quick Connect  
Plugin jigs

Small Footprint/High Density  
Design

**See in YouTube**

[https://youtu.be/WN6bx\\_F-VG4](https://youtu.be/WN6bx_F-VG4)  
**Search Box: HDD YEC**

Backed by 35 years of experience in digital storage technology, DECA MG3800R Rack System is built for volume erasure tasks - delivering efficiency, flexibility, and reliability for higher ROI and lower RMA rates.

#### Hardware-based 80-Drive Erasure Solutions

The reliable and robust DECA MG3800R Rack System supports up to 80 M.2 devices at high-speed data rates. Compatible with both NVMe and SATA M.2 SSDs, the hardware-based DECA MG3800R features a robust architecture that supports a broad range of specifications without the need for frequent firmware-related downtime.

#### No licenses, annual contracts, or subscriptions

With zero pay-per-wipe fees, you are free to test and wipe as many drives as you need. The more drives MG3800R processes, the higher your long-term ROI.

#### Quick and Seamless Drive Connectivity

The precisely designed Quick Connect jig smoothly engages 2.5" and 3.5" drive connections in the blink of an eye. QUICK CONNECT saves significant time compared to manual cable connection methods

#### Powerful Test & Erase Command Scripts

The MG3800R supports drive sanitization compliant with **NIST 800-88** and **DoD 5220.22-M** standards. It also supports **Security Erase** and custom scripting via the YEC host software library. **Test & Repair** script identifies weak, unstable, so-called "bad sectors" and repair by reallocation where possible.

#### Reporting – Log, CSV Database, Work Report

Detailed logs and CSV reports are automatically generated for all process events. In the event of error, the system records the timestamp and the specific cause of the failure. Work Report templates support customizable data field layouts. These reports include user-definable health grades, bad sector counts, and Power-On-Hour (POH) .

#### Beyond Cookie-Cutter scripts

The YEC Rack System moves beyond cookie-cutter scripts, offering fully customizable command scripting. The power of YEC scripting lies in its ready-to-use scripts, which remain modifiable to accommodate new technology. This ensures an optimized test command flow that reduces RMA occurrences as much as possible.

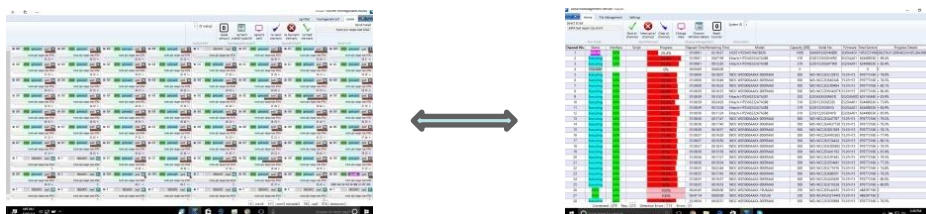


"Trusted by digital technology  
professionals for over three decades. "

# DECA MG3800R

## Highlights

- Erase Scripts - NIST800-88 Purge, Clear, Verify, DoD5220.00-M (3, 7 times), Secure Erase in Enhanced Mode, One-time Erase, Multi-times Erase & more.
- Test Scenarios - Ready Time, Device Identify, SMART, Error Log Read, Buffer Test, Power Cycle, HPA/DCO/AMAC Removal, Acoustic Management, Butterfly Seek & Write, Test & Repair Sequential Read, Read Write BlockTest, Read Random, Write Random, Target Scan, Checksum Calc, Short Test
- No IT knowledge or background required for operators on Day 1.
- Each drive port can independently run its selected script and interface type, regardless of the settings on other ports.
- The quick-connect plug-in jig ensures seamless connection of loose drives. Optional jigs are available for various drive caddy designs.
- Small footprint and quiet design.
- Two progress views (horizontal and vertical) increase operational productivity.



## Recommended Applications

- Value added ITAD, New drive qualification for data centers, Quality assurance, Manufacturing, Re-manufacturing, Reverse logistics, RMA control, New product development, SSD life cycle management

## 64-Port and 48-Port Configurations Available.

Contact us for more information.

## SPECIFICATIONS

	Descriptions
Model	DECA MG3800R
Part No.	Y-2169
Supported Interface	M.2 NVMe / M.2 SATA
Port Connections	80 Channels
Dimensions	L47 "x H59" x W26" (120 x 150 x 66cm)
Weight	440 lb (200kg)

	Descriptions
Supported Form Factor	M.2 SSD, 4K Native
Power Specifications	AC 200-240V 50/60Hz
Power Consumption	2600VA
Communication Port	Ethernet (1000BASE-T)
Operating Environment	Temperature 10 - 35°C (50 – 95°F) Humidity 30 - 80%
Maximum Storage Capacity	M.2: 9.4ZB
Host Software OS	Windows 10/11

[www.yecglobalsolutions.com](http://www.yecglobalsolutions.com)

[www.kk-yec.co.jp](http://www.kk-yec.co.jp)

Global Sales and Support  
**YEC Global Solutions, Inc.**  
10541 Calle Lee Suite 121, Los Alamitos, CA 90720 U.S.A.  
T: 657-298-3276 [sales@yecglobalsolutions.com](mailto:sales@yecglobalsolutions.com)

Developed and Manufactured  
**YEC Co. Ltd.,**  
3-44-45 Minami-Machida, Machida, Tokyo 194-0005 Japan  
T: +81- 42-796-8511 F: +81- 42-796-2367

\* Specifications and the design of product are subject to change without notice.

260108200