

DECA YG2960R

Erase & Test Solutions

SAS 6G | SATA | SCSI | FC

Flexible Interface Configurations

- 80 Ports SAS 6G / SATA
- 8 Ports SCSI
- 8 Ports FC

Test & Erasure Scripts

NIST SP800-88
DoD 5220.00 M
Security Erase
Test & Repair
Modifiable Scripts
Health Grading
Power-on-Hour
and more...

Dual Push-button and
In-Screen Operations

Side Cooling Fan Units

Casters and Stabilizers

Loose Drives and Drives in
Server Caddie

80 Quick Connect
Plugin jigs

Small Footprint/High Density
Design

See in YouTube

https://youtu.be/WN6bx_F-VG4

Search Box: HDD YEC

Backed by 35 years of experience in digital storage technology, DECA YG2960R Rack System is built for volume erasure tasks - delivering efficiency, flexibility, and reliability for higher ROI and lower RMA rates.

Hardware-based 80-Drive Erasure Solutions

The reliable and robust DECA YG2960R Rack System supports up to 80 SATA and SAS drives at 6 Gbps speeds. Compatible with both 2.5" and 3.5" HDDs and SSDs, the hardware-based DECA YG2960R features a robust architecture that supports a broad range of specifications without the need for frequent firmware-related downtime.

No licenses, annual contracts, or subscriptions

With zero pay-per-wipe fees, you are free to test and wipe as many drives as you need. The more drives YG2960R processes, the higher your long-term ROI.

Quick and Seamless Drive Connectivity

The precisely designed Quick Connect jig smoothly engages 2.5" and 3.5" drive connections in the blink of an eye. QUICK CONNECT saves significant time compared to manual cable connection methods

Powerful Test & Erase Command Scripts

The YG2960R supports drive sanitization compliant with NIST 800-88 and DoD 5220.22-M standards. It also supports Security Erase and custom scripting via the YEC host software library. Test & Repair script identifies weak, unstable, so-called "bad sectors" and repair by reallocation where possible.

Reporting – Log, CSV Database, Work Report

Detailed logs and CSV reports are automatically generated for all process events. In the event of error, the system records the timestamp and the specific cause of the failure. Work Report templates support customizable data field layouts. These reports include user-definable health grades, bad sector counts, and Power-On-Hour (POH).

Beyond Cookie-Cutter scripts

The YEC Rack System moves beyond cookie-cutter scripts, offering fully customizable command scripting. The power of YEC scripting lies in its ready-to-use scripts, which remain modifiable to accommodate new technology. This ensures an optimized test command flow that reduces RMA occurrences as much as possible.



"Trusted by digital technology
professionals for over three decades."

For more information, please visit www.yecglobalsolutions.com or call (657) 298-3276.

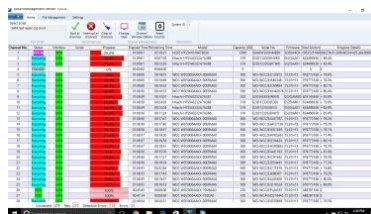
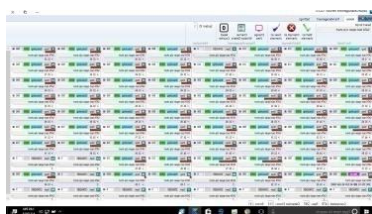
DECA YG2960R

Highlights

- Erase Scripts - NIST800-88 Purge, Clear, Verify, DoD5220.00-M (3, 7 times), Secure Erase in Enhanced Mode, One-time Erase, Multi-times Erase & more.
- Test Scenarios - Ready Time, Device Identify, SMART, Error Log Read, Buffer Test, Power Cycle, HPA/DCO/AMAC Removal, Acoustic Management, Butterfly Seek & Write, Test & Repair Sequential Read, Read Write BlockTest, Read Random, Write Random, Target Scan, Checksum Calc, Short Test
- No IT knowledge or background required for operators on Day 1.
- Each drive port can independently run its selected script and interface type, regardless of the settings on other ports.
- The quick-connect plug-in jig ensures seamless connection of loose drives. Optional jigs are available for various drive caddy designs.
- Small footprint and quiet design.
- Two progress views (horizontal and vertical) increase operational productivity.



[Server Drive Caddy Support]



Recommended Applications

- Value added ITAD, New drive qualification for data centers, Quality assurance, Manufacturing, Re-manufacturing, Reverse logistics, RMA control, New product development, HDD/SSD life cycle management

64-Port and 48-Port Configurations Available.

Contact us for more information.

SPECIFICATIONS

	Descriptions
Model	DECA YG2960R
Part No.	Y-2702
Supported Interface	SATA/SAS 6G
Optional Interface	SCSI / FC
Port Connections	96 Channels
Dimensions	L47 "x H59" x W26" (120 x 150 x 66cm)
Weight	440 lb (200kg)

	Descriptions
Supported Form Factor	2.5"/3.5" HDD, SSD, SS Hybrid Drive, 4K Native
Power Specifications	AC 200-240V 50/60Hz
Power Consumption	2600VA
Communication Port	Ethernet (1000BASE-T)
Operating Environment	Temperature 10 - 35°C (50 - 95°F) Humidity 30 - 80%
Maximum HDD Capacity	SATA: 144PB SAS: 9.4ZB M.2: 9.4ZB
Host Software OS	Windows 7/8/10/11

www.yecglobalsolutions.com

www.kk-yec.co.jp

Global Sales and Support
YEC Global Solutions, Inc.
10541 Calle Lee Suite 121, Los Alamitos, CA 90720 U.S.A.
T: 657-298-3276 sales@yecglobalsolutions.com

Developed and Manufactured
YEC Co. Ltd.,
3-44-45 Minami-Machida, Machida, Tokyo 194-0005 Japan
T: +81- 42-796-8511 F: +81- 42-796-2367

* Specifications and the design of product are subject to change without notice.

260108200